

**Grŵp WCA Oed Blynyddoedd o Addysg Statws Priodasol Grŵp Ethnig**

0	40	2	0	1
0	40	2	0	1
0	45	2	0	0
0	70	2	0	0
0	38	2	0	1
0	50	2	0	1
0	22	2	0	0
0	30	2	0	1
0	45	2	0	0
0	35	2	0	1
0	50	3	0	1
0	30	2	0	1
0	30	2	0	1
0	42	2	0	1
0	30	2	0	1
0	25	2	0	1
0	45	2	0	1
0	60	2	0	0
0	35	2	0	1
0	40	2	0	1
0	36	2	4	1
0	35	2	0	1
0	35	2	0	1
0	30	2	0	1
0	30	2	0	1
0	32	2	0	1
0	25	2	0	1
0	20	2	0	1
0	28	2	0	1
0	43	2	0	0
1	23	2	0	1
1	25	2	0	1
1	35	2	0	1
1	30	2	0	1
1	55	2	0	1
1	25	2	0	1
1	18	2	7	1
1	23	2	7	1
1	33	2	9	1
1	36	2	0	1
1	40	2	0	1
1	27	2	0	1
1	38	5	0	1
1	33	2	0	1

1	30	2	0	1
1	30	2	0	1
1	35	2	0	1
1	37	2	0	1
1	28	2	4	1
1	47	2	0	1
1	34	5	0	1
1	22	2	8	1
1	25	2	0	1
1	27	2	0	1
1	30	1	0	1
1	80	1	0	1
1	28	5	0	1
1	25	2	0	1
1	36	2	0	1
1	19	2	8	1

**Mynegai Cyfoeth Blynnyddoedd o Brofiad Swm a Gynhyrchwyd % Wedi'i Farchnata**

10	3	9	100
10	4	9	
	4	40	100
50	4	20	100
1	3	40	100
7	4	5	100
4	1	165	90.90909
8	3	50	100
10	4	10	100
	3	13	100
30	4	2	100
2	4	22	90.90909
10	4	15	100
19	4	6	83.33334
3	3	7	100
5	4	8	100
	3	25	100
35	4	3	100
5	3	29	100
	4	3	
	3	23	100
20	3	14	100
1	3	5	100
10	2	32	100
3	4	5	100
2		5	100
3	4	80	100
5	3	15	100
	3	5	100
20	4	9	100
1	3	6	100
8	2	39	97.4359
	2	1	100
6	3	15	86.66666
	3	5	100
1	3	10	100
3	4	15	100
5	3	18	83.33334
13	3	55	94.54546
10	4	10	100
10	3	80	100
	2	24	100
16	3	52	90.38461

6		40	100
	1	35	100
10	3	100	95
	3	30	90
2	3	21	71.42857
20	2	76	100
7	3	10	100
2	3	15	100
6	3	54	100
13	2	26	100
7	3	22	100
	3	30	100
1	2	30	100
9	3	160	100
17	3		
	3	15	100

**Dibyniaeth o  
ran  
bywiolaeth**

---

36.41

52.87

50.16

40.84

48.61

39.21

63.20

36.35

17.22

25.79

11.11

37.72

35.60

27.62

18.20

32.60

30.30

34.22

27.90

40.83

57.34

43.08

19.43

33.12

32.61

26.56

46.86

35.75

26.34

28.33

30.09

35.24

32.24

40.49

23.36

33.80

33.64

28.43

55.34

38.96

43.69

30.30

71.49

17.54  
37.38  
44.28  
31.35  
36.88  
81.66  
8.49  
27.12  
30.32  
44.74  
25.11  
13.54  
23.19  
29.48  
81.23  
23.91

<b>Grŵp WCA</b>	<b>Oed</b>	<b>Blynnyddoedd o Addysg Statws Priodasol</b>	<b>Grŵp</b>	<b>Ethnic</b>
0	30	2	0	1
0	28	2	0	1
0	45	2	0	0
0	34	2	0	1
0	28	2	0	1
0	45	2	0	1
0	34	2	2	1
0	35	2	0	1
0	35	2	0	1
0	20	2	1	1
0	30	2	8	1
0	52	2	0	1
0	28	2	0	0
0	48	2	0	1
0	50	2	0	1
0	40	2	0	1
0	30	2	0	0
0	60	2	0	1
0	40	2	0	0
0	30	2	0	1
0	60	2	0	1
0	35	2	0	1
0	40	2	0	1
0	40	2	0	1
0	32	2	0	1
0	35	2	0	1
0	55	2	0	1
0	30	2	0	1
0	50	4	0	1
0	50	5	0	1
1	28	2	0	1
1	25	2	0	1
1	38	2	0	1
1	25	2	3	1
1	41	2	0	1
1	39	2	0	1
1	22	4	5	1
1	28	2	5	1
1	25	2	0	1
1	30	3	0	1
1	25	2	0	1
1	19	2	8	1
1	30	2	0	1
1	40	2	0	1

1	40	2	0	1
1	27	2	0	1
1	30	2	0	1
1	58	3	0	1
1	30	2	0	1
1	30	2	0	1
1	25	5	0	1
1	40	2	0	1
1	27	2	0	1
1	29	2	0	1
1	27	2	0	1
1	45	2	0	1
1	18	2	0	1
1	38	3	0	1
1	35	2	0	1
1	26	2	0	1



**Mynegai Cyfoeth Blynnyddoedd o Brofiad Swm a Gynhyrchwyd % Wedi'i Farchnata**

4	3	50	100
5	3	60	100
20	3	30	100
3	3	20	100
5	3	15	66.66666
	3	50	100
2	4	15	60
20	4	5	100
20	3	60	100
2	4	6	100
7	3	25	100
	4	20	100
8	4	7	
6	3	40	100
10	4	10	100
23	4	8	100
10	4	4	
5	4	3	66.66666
10	3	6	100
	3	70	100
	4	6	100
5	2	5	60
10	4	6	100
2	3	40	100
5	3	13	100
	4	8	100
15	3	30	100
10	4	5	100
20	1	5	60
2	3	15	100
4	3	27	92.59259
4	3	70	50
5	2	63	100
14	2	70	100
7	3	20	50
20	3	32	62.5
20	3	13	92.30769
8	2	39	97.4359
	3		
1	3	10	100
	3	15	100
	3	35	100
15	2	45	100

17	3	35	100
	2	40	100
4	3	51	98.03922
6	2	90	100
2		33	93.93939
	3	100	100
13	2	26	100
2	3	8	100
8	3	8	100
2	3	31	93.54839
	2	40	75
10	4	4	100
5	3	18	88.88889
8	3	12	100

**Dibyniaeth o  
ran  
bywiolaeth**

---

26.63

44.21

38.29

51.80

45.71

53.64

54.80

40.96

23.86

35.74

38.46

37.53

41.93

31.02

42.33

33.63

34.04

38.98

20.81

45.26

25.33

39.89

28.50

32.27

45.62

50.78

34.75

29.12

38.70

15.96

56.67

35.11

40.21

24.90

42.45

60.99

39.44

35.24

14.90

33.80

23.91

25.63

55.29

51.06  
52.08  
34.08

54.17  
21.76  
34.12  
44.74  
41.52  
48.03  
35.84  
29.24  
12.24  
44.30  
66.31

**Grŵp WCA Oed Blynyddoedd o Addysg Statws Priodasol Grŵp Ethnig**

0	28	2	0	1
0	28	5	0	1
0	40	4	0	1
0	32	2	5	1
0	45	2	0	0
0	46	2	0	1
0	30	2	0	1
0	30	2	0	1
0	27	2	0	1
0	38	2	0	0
0	30	2	0	1
0	35	2	0	1
0	43	2	0	1
0	35	2	0	1
0	25	2	0	1
0	40	2	0	1
0	27	2	5	1
0	55	2	0	1
0	25	2	0	1
0	36	2	0	1
0	30	2	0	1
0	40	2	0	1
0	25	2	0	1
0	50	2	0	0
0	38	2	0	1
0	45	2	0	1
0	55	2	0	1
0	18	2	3	1
0	45	2	0	1
0	20	2	0	1
1	25	2	0	1
1	36	2	0	1
1	27	2	0	1
1	38	3	0	1
1	26	2	0	1
1	37	2	0	1
1	26	2	0	1
1	35	2	7	1
1	40	2	0	1
1	30	2	0	1
1	35	2	0	1
1	18	2	0	1
1	57	2	0	1
1	45	2	0	1

1	38	4	0	1
1	28	2	0	1
1	22	4	5	1
1	40	2	0	1
1	30	2	6	1
1	30	1	0	1
1	25	2	0	1
1	34	2	5	1
1	25	2	0	1
1	25	2	8	1
1	45	2	0	1
1	28	2	0	1
1	28	2	0	1
1	35	2	0	1
1	43	2	0	1
1	29	2	0	1

**Mynegai Cyfoeth Blynnyddoedd o Brofiad Swm a Gynhyrchwyd % Wedi'i Farchnata**

6	3	40	100
2	3	25	100
2	1	3	100
	3	10	100
20	3	30	100
3	4	5	100
	3	40	100
6	3	24	100
10	3	50	100
1	2	10	100
1	3	5	100
7	4	3	
10	3	30	100
5	4	58	86.20689
10	3	9	100
	3	40	100
4	4	15	66.66666
6	4	2	
5	3	30	100
7	2	75	100
18	4	15	66.66666
4	3	30	100
30	3	30	100
	3	11	100
20	4	14	100
15	3	30	100
5	4	30	100
3	4	2	100
3	4	34	88.23529
3	3	50	100
16	3	28	89.28571
8	3	8	100
10	4	4	100
3	3	8	100
	3	8	100
4	3	45	100
8	3	4	100
20	3	110	100
	4	10	90
8	3	35	100
	2	40	75
8	3	75	100
8	3	95	97.89474

10	4	3	33.33333
8	3	60	100
16	3	310	100
7	3	22	100
4	3	70	50
6	3	90	100
15	2	60	100
	2	15	100
	2	16	100
4	3	27	92.59259
	3	180	94.44444
5	3	14	100
8	3	40	100



**Dibyniaeth o  
ran  
bywiolaeth**

---

39.58

11.42

39.80

37.62

38.29

42.65

33.49

25.03

30.06

42.23

19.43

26.73

33.45

64.38

36.41

20.75

44.73

36.65

20.68

29.41

50.58

21.68

34.64

32.99

48.75

34.75

28.76

49.32

43.53

17.59

60.41

48.03

12.24

54.27

31.01

45.47

56.27

42.73

26.69

34.93

29.24

46.66

64.59

39.25

32.49

60.61

25.11

35.11

48.88

58.66

38.42

24.80

56.67

54.77

44.75

<b>Grŵp WCA</b>	<b>Oed</b>	<b>Blynnyddoedd o Addysg Statws Priodasol</b>	<b>Grŵp</b>	<b>Ethnic</b>
0	45	2	0	1
0	45	2	0	1
0	55	2	0	1
0	36	2	0	1
0	22	2	0	1
0	38	2	0	1
0	23	2	2	1
0	40	2	0	1
0	27	2	0	1
0	25	2	0	0
0	35	2	0	1
0	36	2	0	1
0	32	2	5	1
0	40	2	0	1
0	35	2	0	1
0	35	2	0	1
0	33	2	0	1
0	38	2	0	1
0	28	2	0	1
0	30	2	0	1
0	35	2	0	1
0	28	2	0	1
0	50	2	0	1
0	22	2	0	1
0	35	2	0	0
0	35	2	0	1
0	22	2	0	1
0	40	2	0	0
0	35	2	0	1
0	25	2	0	1
1	32	2	0	1
1	23	2	0	1
1	45	2	0	1
1	57	2	0	1
1	35	1	0	1
1	18	1	9	1
1	30	2	0	1
1	10	2	2	1
1	19	2	9	1
1	47	2	0	1
1	28	2	0	1
1	27	2	0	1
1	26	2	0	1
1	80	1	0	1

1	18	1	10	1
1	30	2	0	1
1	30	3	0	1
1	38	2	0	1
1	30	2	0	1
1	43	2	0	1
1	30	1	0	1
1	29	2	10	1
1	40	2	0	1
1	25	2	0	1
1	35	2	3	1
1	35	2	9	1
1	22	2	0	1
1	26	2	0	1
1	35	2	0	1
1	35	2	0	1

**Mynegai Cyfoeth Blynnyddoedd o Brofiad Swm a Gynhyrchwyd % Wedi'i Farchnata**

7	3	24	100
20	1	200	100
28	3	20	100
5	3	30	100
5	3	45	100
6	3	20	100
2	3	30	100
8	4		
5	3	12	100
7		25	
21	2	130	92.30769
20	4	15	66.66666
	3	10	100
10	3	9	100
11	3	15	100
5	3	12	100
5	4	7	42.85714
4	3		
4	4	20	100
5	1	25	100
3	4	2	
	4	3	100
10	4	6	100
	3	65	100
7	3	30	100
	3	7	100
20	4	25	
20	4	5	100
6	4	2	
11	3	8	100
2	2	35	100
	2	3	100
8	3	75	100
8	3	35	100
	2	30	100
	4	10	90
	2	35	100
6	3	27	100
8	4	20	100
7	2	50	90
3	3	80	100
4	3	45	100
	3	30	100

6	1	38	100
	3	12	100
30	4	42	95.2381
5	2	63	100
	3	35	100
5	3	14	100
7	3	22	100
10	3	23	86.95652
	2	55	100
20	4	7	100
15	2	80	100
3	2	50	70
10		23	100
	2	1	100
5	3	42	100

**Dibyniaeth o  
ran  
bywiolaeth**

---

45.56693  
66.71455  
40.81751  
20.6828  
20.76491  
33.9655  
24.86653  
33.33232  
31.21501  
17.03511  
48.8133  
59.20723  
37.62471  
36.40733  
29.13872  
48.78926  
25.74902  
29.0043  
38.64504  
44.35122  
40.715  
33.98568

15.21258  
52.90443  
23.99734  
22.97742  
42.26989  
40.95703  
36.64834  
37.42638  
28.85492  
45.81535  
46.66093  
58.0221  
38.71363  
26.69206  
40.27823  
29.86095  
41.70509  
41.84904  
37.4901  
45.47385  
13.54227

17.45904  
49.46018  
48.67215  
40.20614  
25.62979  
54.76685  
25.10575

55.98309  
34.89701  
25.42988  
80.35781  
16.70177  
30.65287  
32.24306  
27.21369



<b>Grŵp WCA</b>	<b>Oed</b>	<b>Blynnyddoedd o Addysg Statws Priodasol</b>	<b>Grŵp</b>	<b>Ethnic</b>
0	55	2	0	0
0	19	1	7	1
0	35	2	0	1
0	30	2	0	1
0		2	0	0
0	40	2	0	1
0	50	2	0	1
0	25	2	0	1
0	35	2	0	1
0	30	2	0	1
0	35	2	0	1
0	30	2	0	1
0	20	2	1	1
0	25	2	0	1
0	23	2	0	1
0	40	2	0	1
0	40	2	0	1
0	19	2	0	1
0	30	2	0	0
0	30	2	0	0
0	30	2	0	1
0	45	2	0	1
0	32	2	0	1
0	32	2	0	1
0	40	2	0	0
0	34	2	0	0
0	30	2	0	1
0	37	2	3	1
0	20	2	0	1
0	32	2	4	1
1	38	2	0	1
1	22	2	0	1
1	20	2	0	1
1	50	2	0	1
1	27	2	0	1
1	25	2	8	1
1	40	2	0	1
1	30	2	0	1
1	40	2	0	1
1	25	2	0	1
1	35	2	0	1
1	52	2	0	1
1	35	2	0	1
1	28	2	0	1

1	27	5	0	1
1	27	2	0	1
1	30	5	0	1
1	35	1	0	1
1	48	2	0	1
1	33	2	9	1
1	20	4	7	1
1	32	2	0	1
1	35	2	0	1
1	36	2	0	1
1	25	2	0	1
1	28	2	0	1
1	30	2	0	1
1	40	2	0	1
1	23	2	0	1
1	38	2	4	1

**Mynegai Cyfoeth Blynnyddoedd o Brofiad Swm a Gynhyrchwyd % Wedi'i Farchnata**

35	4	10	100
20	3	10	100
10	2	80	100
12	4	30	100
2	3	18	100
2	3	40	100
10	3	20	100
6	4	20	75
3	3	6	100
20	3	60	100
1	2	10	100
2	4	6	100
	4	18	100
2	4	8	75
10	4	10	100
20	3	10	100
4	4	12	100
10	3	25	100
	3	8	100
6	3		
30	3		
7	4	15	66.66666
10	4	16	37.5
20	4	10	100
	4	15	100
5	4	20	50
4	4	3	100
7	4	6	100
	4	10	100
3	2	50	70
	2	18	100
2	2	31	100
	4	15	20
15	2	60	100
20	4	18	83.33334
9	2	160	100
2	4	13	100
10	3	25	100
12	3	85	100
9	3	20	100
	3	50	80
2	3	20	100

6	2	30	100
	2	30	100
25	3		
8	3	35	100
23	3	15	100
13	3	55	94.54546
3	1	34	100
8	3	42	100
2	3	25	100
2	3	18	100
	2	55	100
10	4	3	33.33333
	2	95	100
5	2	150	93.33334
2	2	35	100
25	3	30	100

**Dibyniaeth o  
ran  
bywiolaeth**

---

24.73022  
50.59538  
46.09436  
67.27527  
32.39971  
32.26785

35.71126  
47.14214  
17.68621  
30.30954  
42.22618  
35.73743  
27.40797  
17.37782  
50.61531  
30.14394  
25.61561  
34.5289  
23.3706  
30.52263  
34.34594  
21.61308  
42.29762  
45.8681  
48.8648  
39.09472  
28.40718  
39.68125  
28.26803

16.70177  
18.89805  
15.64917  
14.77565  
58.66129  
36.53827  
31.9943  
38.73869  
28.84591  
29.95491  
49.54007  
20.16305  
13.55394

24.94333  
32.00453  
32.24757  
58.0221  
35.65192  
55.33898  
47.6694  
53.7751  
35.378  
31.81858  
40.92419  
39.25254  
44.97508  
54.5557  
28.85492  
42.64048

**Grŵp WCA Oed Blynyddoedd o Addysg Statws Priodasol Grŵp Ethnig**

0	38	2	0	1
0	30	2	0	1
0	35	2	0	1
0	35	2	0	1
0	18	2	3	0
0	24	2	0	1
0	50	2	0	1
0	20	2	0	1
0	46	2	0	1
0	33	2	0	1
0	23	2	2	1
0	36	2	0	1
0	29	2	0	1
0	30	2	8	1
0	30	2	0	1
0	36	2	0	1
0	35	2	0	1
0	40	2	0	1
0	40	2	0	1
0	22	2	0	0
0	48	2	0	1
0	40	2	0	1
0	45	2	0	1
0	30	2	0	1
0	30	2	0	1
0	30	2	0	1
0	30	2	0	1
0	40	2	0	1
0	38	2	0	1
0	40	2	0	0
1	25	2	0	1
1	32	2	10	1
1	35	2	0	1
1	38	2	0	1
1		2	0	1
1	28	2	4	1
1	48	2	0	1
1	27	5	0	1
1	34	2	0	1
1	27	2	0	1
1	25	2	3	1
1	30	2	0	1
1	22	2	8	1
1	40	2	0	1

1	28	2	0	1
1	21	1	6	1
1	18	2	7	1
1	40	2	0	1
1	39	2	0	1
1	40	2	0	1
1	35	3	0	1
1	38	2	0	1
1	38	2	0	1
1	23	2	7	1
1	21	2	4	1
1	40	2	0	1
1	45	2	0	1
1	48	2	4	1
1	48	3	10	1
1	45	2	0	1



**Mynegai Cyfoeth Blynnyddoedd o Brofiad Swm a Gynhyrchwyd % Wedi'i Farchnata**

6	3	20	100
2	4	25	100
12	3	10	100
5	2	5	60
2	1	120	100
9	4	8	87.5
4	3	25	100
1	4	4	100
15	3	50	100
15	3	7	100
2	3	30	100
10	3	60	100
14	3	90	88.88889
7	3	25	100
	3	40	100
8	3	80	100
10	4	3	100
	3	21	100
17	4		
3	4	8	100
10	4	4	100
2	3	40	100
10	2	80	100
7	3	17	100
3	4	5	100
12	4	30	100
6	3	24	100
5	4	3	100
4	4	13	76.92308
12	4	5	60
	3	50	100
17	3	43	100
	4	21	47.61905
5	2	63	100
20	3	40	100
2	3	21	71.42857
	4	30	93.33334
6	2	30	100
	4	10	100
	2	24	100
3	3	10	100
2	3	15	100
8	3	60	100

2	3	20	100
3	4	15	100
10	3	23	86.95652
17	3	35	100
4	3	12	100
5	3	18	83.33334
2	3	21	100
7	4	10	30
	4		
38	3	47	100
1	4	20	90
2	3	31	93.54839

**Dibyniaeth o  
ran  
bywiolaeth**

---

33.9655  
31.55145  
30.91473  
39.88947  
60.22873  
48.74284  
26.54332  
25.90008  
60.40339  
41.77721  
24.86653  
57.31323  
37.20177  
38.45764  
33.48833  
51.3843  
44.49392  
27.92097  
59.95538  
33.8611  
47.42933  
32.26785  
47.04364  
28.87771  
32.60978  
67.27527  
25.03135  
21.8808  
39.83112  
28.63425  
12.18566  
37.5899  
66.33686  
40.20614  
37.54135  
36.8808  
55.30227  
24.94333  
46.74211  
30.29551  
  
33.75489  
27.12454  
32.49272

13.55394

33.64014

55.98309

51.05665

35.95951

28.42671

29.29029

64.7006

30.97098

41.60181

23.46287

35.83854

**Grŵp WCA Oed Blynnyddoedd o Addysg Statws Priodasol Grŵp Ethnig**

0	32	2	0	1
0	35	2	0	1
0	25	2	0	1
0	40	2	0	1
0	28	2	0	1
0	30	2	0	1
0	20	2	0	1
0	40	2	0	1
0	35	2	0	0
0	34	2	2	1
0	30	2	0	0
0	25	2	0	0
0	35	2	0	1
0	40	2	0	0
0	35	2	0	1
0	45	2	0	1
0	25	2	0	1
0	40	2	0	1
0	18	2	0	1
0	40	2	0	1
0	22	2	0	0
0	60	2	0	1
0	23	2	0	0
0	35	2	0	1
0	60	2	0	1
0	35	2	0	1
0	40	2	0	1
0	16	2	6	1
0	50	2	0	1
0	48	2	0	1
1	35	2	8	1
1	36	5	0	1
1	26	2	0	1
1	20	2	0	1
1	30	2	0	1
1	45	2	0	1
1	45	3	0	1
1	38	5	0	1
1	45	2	0	1
1	32	2	0	1
1	27	2	0	1
1	38	2	0	1
1	25	2	0	1
1	47	2	0	1

1	57	3	0	1
1	35	2	0	1
1	26	2	0	1
1	34	5	0	1
1	38	2	0	1
1	48	2	0	1
1	35	2	0	1
1	48	2	0	1
1	30	2	0	1
1	25	2	0	1
1	25	2	3	1
1	25	2	0	1
1	19	2	8	1
1	45	2	0	1
1	40	2	0	1
1	50	3	0	1

**Mynegai Cyfoeth Blynnyddoedd o Brofiad Swm a Gynhyrchwyd % Wedi'i Farchnata**

1	4		
1	3	5	100
11	4	3	100
18	4	15	66.66666
12	4	3	100
2	3	3	100
5	4	5	
10	4	3	100
10	4	7	100
2	4	15	60
10	4	4	
6	3		
5	3	12	100
20	4	10	100
15	3	14	100
12	3	20	100
4	3	30	100
30	4	15	100
1	3	12	83.33334
	3	50	100
4	1	165	90.90909
5	4	3	66.66666
2	3	37	81.08108
8	4	23	65.21739
40	3	15	66.66666
	3	60	100
	4	3	
	3	22	100
	3	50	100
10	4	4	100
10	3	6	100
3	3	70	100
1	3	16	100
3	3	35	88.57143
	4		
25	3	30	100
	2	70	100
12		10	100
12	3	9	77.77778
16	3	20	100
	2	55	100
12	1	45	100

6	4	15	66.66666
8	3	135	100
7	3	10	100
	3	20	90
	4	30	93.33334
8	2	500	100
30	2	50	100
	2	5	100
	2	55	100
6	3	90	100
	3	15	100
12	4	50	100
17	3	35	100



**Dibyniaeth o  
ran  
bywiolaeth**

---

34.11641

19.42556

42.97081

50.57646

31.0327

26.92057

29.89135

27.58677

37.55978

54.79626

34.04184

28.97535

38.14761

34.63725

32.30225

21.68044

44.39112

34.29911

28.79603

63.20197

38.97655

36.85492

40.16167

29.58945

66.76812

40.83368

19.3682

34.52174

47.42933

22.67083

19.67155

14.78059

75.40468

30.97098

33.49922

25.98051

50.17314

31.22688

49.13901

40.92419

37.47103

31.20209

50.1482

8.487963

30.36054

55.30227

88.49795

75.65601

39.1267

34.89701

48.87508

23.9062

35.75522

51.05665

<b>Grŵp WCA</b>	<b>Oed</b>	<b>Blynnyddoedd o Addysg Statws Priodasol</b>	<b>Grŵp</b>	<b>Ethnic</b>
0	35	2	0	1
0	56	2	0	0
0	30	2	0	1
0	22	2	0	0
0	57	2	0	1
0	30	2	0	1
0	30	2	0	1
0	48	2	0	1
0	20	2	0	1
0	57	2	0	1
0	45	2	0	1
0	30	2	0	1
0	40	2	0	1
0	48	2	0	1
0	45	2	0	1
0	25	2	6	1
0	45	2	0	0
0	40	2	0	1
0	38	2	0	1
0	45	2	0	0
0	30	2	0	1
0	30	2	0	1
0	20	2	0	1
0	40	2	0	1
0	35	2	9	1
0	55	2	0	1
0	30	2	0	1
0	50	2	0	1
0	25	2	0	1
0	40	2	0	1
1	35	2	0	1
1	26	2	0	1
1	18	2	0	1
1	25	2	5	1
1	40	2	0	1
1	38	2	0	1
1	47	2	0	1
1	60	2	0	1
1	36	2	0	1
1	28	2	0	1
1	47	2	0	1
1	32	2	0	1
1	38	4	0	1
1	37	1	7	1

1	55	2	0	1
1	28	2	12	1
1	30	1	0	1
1	28	2	0	1
1	28	2	0	1
1	55	2	0	1
1	25	2	0	1
1	27	2	0	1
1	38	2	0	1
1	50	2	0	1
1	45	2	0	1
1	22	2	0	1
1	52	2	0	1
1	25	2	0	1
1	38	2	0	1

**Mynegai Cyfoeth Blynnyddoedd o Brofiad Swm a Gynhyrchwyd % Wedi'i Farchnata**

5	4	10	50
40	4	25	100
4	4	6	100
4	1	165	90.90909
20	4	20	75
15	2	67	97.01492
	3	40	100
10	4	4	100
4	3	30	100
	4	3	
	3	16	100
2	4	4	75
	3	12	100
2	3	10	40
30	3		
20	4	8	100
2	4	4	
20	2	50	30
4	3		
	4	40	100
8	3	40	100
6	3	24	100
3	4	34	88.23529
2	4	4	100
6	4	4	50
7	4	15	66.66666
15	2	20	100
10	4	10	100
7	3	8	100
10	3	13	100
	1	15	100
8	3	135	100
	2	40	75
15	2	40	100
10	3	80	100
3	2	15	66.66666
12	1	45	100
10	3		
16	3	28	89.28571
2	3	20	100
20	2	76	100
11	3	8	100
	3	30	100

9	3	15	66.66666
12	3	150	66.66666
7	3	22	100
	2	16	100
8	2	36	100
2	3	42	100
3	2	37	100
2	3	25	100
4	3	12	100
2	2	31	100
12	3	40	100
9	3	60	100
9	3	20	100
	2	55	100
16	3	20	100

**Dibyniaeth o  
ran  
bywiolaeth**

---

29.008

45.94825

27.06188

63.20197

43.18145

45.27306

33.48833

37.95877

21.81457

38.86425

38.49567

43.72383

51.1415

34.34594

32.76435

21.26847

29.92618

29.0043

50.16195

26.29816

25.03135

43.53007

27.51259

26.30272

41.00772

75.35763

42.32657

32.24174

27.9964

29.09211

50.1482

29.23922

44.95619

43.69289

36.6293

37.47103

46.11629

60.41257

13.55394

81.66029

37.42638

39.4156

28.73004  
55.27253  
25.10575  
24.80181  
38.41496  
22.2153  
27.86935  
31.29185  
35.95951  
15.64917  
25.62511  
48.7145  
49.54007  
40.92419  
49.13901



Grŵp WCA	Oed	Blynyddoedd o Addysg	Statws Priodasol
0	37	0	2
0	30	0	2
0	25	0	2
0	37	0	2
0	27	0	2
0	25	0	2
0	30	0	2
0	70	0	2
0	32	0	2
0	45	0	5
0	22	0	2
0	40	0	2
0	45	0	2
0	60	0	2
0	35	0	2
0	25	0	2
0	38	0	2
0	42	0	2
0	31	0	2
0	40	0	2
0	60	0	2
0	40	0	2
0	39	0	2
0	50	0	2
0	60	0	3
0	35	0	5
0	35	0	2
0	50	0	2
0	35	0	2
0	28	0	2
0	30	0	2
0	24	0	2
0	35	0	2
0	50	0	2
0	40	0	2
0	30	0	2
0	44	0	2
0	32	0	2
0	55	0	2
0	35	0	2
0	45	0	2
0	26	0	2

0	40	0	2
0	45	0	2
0	25	0	2
0	28	0	2
0	45	0	2
0	40	0	2
0	40	0	2
0	40	0	2
1	40	0	2
1	26	8	1
1	38	0	2
1	20	4	5
1	60	0	2
1	33	0	5
1	18	7	2
1	42	0	2
1	30	0	3
1	28	0	2
1	35	0	6
1	35	0	2
1	22	8	2
1	32	0	2
1	33	0	2
1	27	3	2
1	27	0	5
1	28	0	2
1	40	0	2
1	25	0	2
1	35	0	2
1	25	8	2
1	18	9	1
1	25	2	2
1	26	0	2
1	40	0	2
1	28	10	3
1	30	0	2
1	35	0	1
1	27	0	2
1	25	0	2
1	32	0	2
1	30	0	2
1	36	0	2
1	40	0	2
1	34	8	2

1	37	0	2
1	45	0	2
1	37	0	1
1	50	0	2
1	25	0	2
1	19	8	1
1	37	0	2
1	50	0	2
1	27	0	2
1	21	4	2
1	38	0	2
1	35	0	2
1	36	0	2
1	25	3	2

---

<b>Grŵp Ethnig</b>	<b>Mynegai Cyfoeth</b>	<b>Blynyddoedd o Brofiad</b>	<b>Swm a Gynhyrchwyd</b>
1	38.40	15	10
1	37.72	2	22
1	36.65	6	2
1	28.53	10	10
1	30.06	10	50
1	30.12	6	18
1	29.41	7	75
1	24.27	50	4
1	29.80		6
1	29.75	9	15
1	22.98		7
1	27.92		21
1	30.30		25
1	25.33		6
1	33.00	16	15
0	17.04	7	25
1	42.59	10	100
1	48.94	20	79
1	37.37	3	2
1	28.72	2	15
1	38.98	5	3
1	27.51	2	4
1	40.85	20	20
1	66.93	20	15
1	7.21	26	9
1	0.00	6	6
0	52.90		65
0	62.09	32	9
1	50.78		8
1	39.58	6	40
1	35.01	10	15
0	14.53	2	5
1	34.64	15	14
1	58.13	21	15
1	61.71		70
1	29.51	3	3
0	45.59	27	35
1		5	
0	24.73	35	10
1	48.79	5	12
1	30.34	8	20
1	20.04	2	12

1	45.37	10	
1	28.80	10	10
1	29.18	10	13
1	43.44		35
1	79.61	16	60
0	38.69	20	3
1	38.43	12	32
0	45.87	20	10
1	51.06	17	35
1			
1	36.63	3	15
1	26.40	3	13
1	52.52	12	
1	12.80	3	40
1	33.64	3	15
1	68.12	25	62
1	48.67	30	42
1	28.02	8	50
1	20.24	5	13
1			
1	27.12	2	15
1	53.78	8	42
1	35.61		24
1	61.83	2	15
1	24.94	6	30
1	39.25	10	3
1	42.73	20	110
1	24.27	3	63
1			180
1	58.66	15	60
1	38.71		30
1	39.82	3	
1	19.67	3	70
1	55.98	10	23
1	31.07	3	12
1	26.69		10
1	58.02	8	35
1	37.49	3	80
1	12.19		50
1	28.36	6	45
1	38.55	3	4
1	40.60	3	96
1	28.12	1	70
1			

1	31.35		30
1	34.83	3	29
1	23.52	8	27
1	39.56	10	100
1	35.11	4	70
1	47.52	6	18
1	31.01		8
1	25.02	21	
1	23.54	3	29
1	29.29	2	21
1	37.00	2	40
1	24.75		38
1	38.22	7	8
1			

---

<b>% Wedi'i Farchnata</b>	<b>Dibyniaeth o ran bywiolaeth</b>
60.00	4
90.91	4
	4
100.00	4
100.00	3
94.44	3
100.00	2
100.00	4
100.00	3
100.00	3
100.00	3
100.00	3
100.00	3
100.00	4
100.00	3
93.00	3
100.00	2
	4
100.00	3
66.67	4
100.00	4
100.00	2
66.67	4
100.00	3
100.00	4
100.00	3
33.33	4
100.00	4
100.00	3
93.33	3
	4
100.00	3
100.00	4
71.43	3
100.00	4
85.71	3
100.00	4
100.00	3
100.00	3
100.00	4

	4
100.00	4
100.00	3
100.00	3
83.33	4
	4
84.38	3
100.00	4
100.00	3
66.67	2
100.00	2
	2
100.00	3
100.00	4
80.65	3
95.24	4
100.00	2
100.00	3
100.00	3
100.00	3
100.00	3
100.00	3
100.00	2
33.33	4
100.00	3
100.00	2
94.44	3
100.00	2
100.00	2
	1
100.00	3
86.96	3
100.00	4
90.00	4
100.00	3
100.00	3
100.00	3
100.00	
100.00	4
100.00	2
42.86	3



90.00	3
100.00	3
100.00	3
100.00	3
50.00	3
100.00	3
100.00	3
	3
96.55	3
100.00	3
100.00	3
100.00	3
62.50	4

---

**ENW'R NEWIDYN**

Grŵp WCA

Oed

Blynyddoedd o addysg

Statws Priodasol

Mynegai Cyfoeth

Grŵp Ethnig

Blynyddoedd o brofiad

Swm a Gynhyrchwyd

% wedi'i farchnata

Dibyniaeth o ran bywiolaeth

**DIFFINIAD**

Dangosydd aelodaeth grŵp WCA (0=heb fod yn aeloc

Oed mewn blynyddoedd

Blynyddoedd o addysg ffurfiol

Statws priodasol (1=sengl; 2=priod; 3=gweddw; 4=we

Dangosydd cyfanredol o nwyddau gwydn a da byw, oi

Ethnigrwydd (0=grŵp lleiafrif ethnig; 1=grŵp mwyafrif

Blynyddoedd o brofiad yn cynhyrchu'r cynnyrch amae

Swm y cynnyrch amaethyddol a gynhyrchwyd yn ysto

Canran y cynnyrch amaethyddol a gynhyrchwyd a gaf

Faint o fywoliaeth yr aelwyd sy'n dibynnu ar y cynnyrc

I o grŵp WCA; 1=aelod o grŵp WCA)

di gwahanu; 5=wedi ysgaru; 6=arall; 7=rhy ifanc)

nd nid tir. Mae mynegai cyfoeth uwch yn dynodi lefel uwch o gyfoeth.

ethnig - Amhara yn Ethiopia & Bamanan yn Mali)

thyddol (mêl i Ethiopia & shea i Mali)

d y 12 mis diwethaf

fodd ei farchnata (mêl i Ethiopia & shea i Mali)

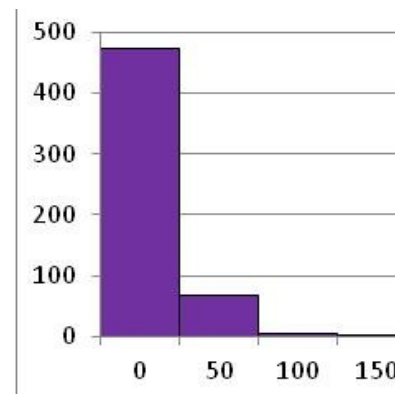
h amaethyddol (mêl i Ethiopia & shea i Mali) (1=y cwbl neu bron y cwbl; 2=tua hanner;

; 3=peth ond llai na hanner; 4=dim neu bron dim)

## ETHIOPIA

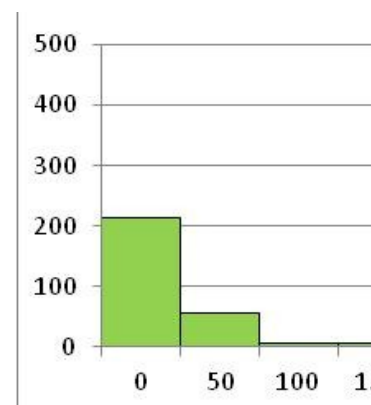
### SWM A GYNHYRCHWYD (HEB FOD MEWN GRWPIAU)

Swm a gynhyrchwyd	Amllder
0	323
2000	2
4000	0
6000	0
8000	0
10000	1
12000	0
14000	0
16000	0
18000	0
20000	0
22000	0
<b>Total</b>	<b>326</b>



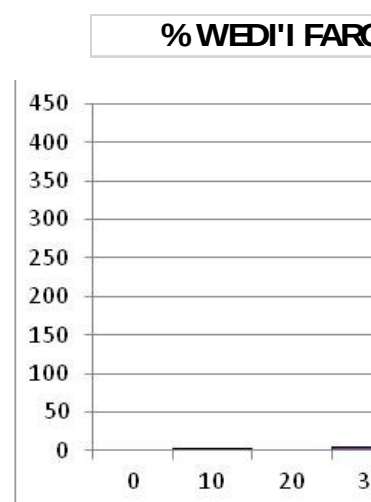
### SWM A GYNHYRCHWYD (AELODAU GRWPIAU)

Swm a gynhyrchwyd	Amllder
0	298
2000	3
4000	3
6000	2
8000	4
10000	1
12000	8
14000	1
16000	4
18000	0
20000	0
22000	1
<b>Cyfanswm</b>	<b>325</b>



### % WEDI'I FARCHNATA (HEB FOD MEWN GRWPIAU)

% wedi'i farchnata	Amllder
0	0
10	2
20	0
30	4
40	2
50	14
60	26
70	14
80	27
90	24
100	401

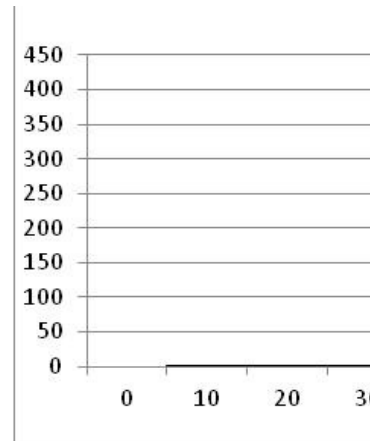


Cyfanswm

514

**% WEDI'I FARCHNATA (AELODAU GRWPIAU)**

<b>% wedi'i farchnata</b>	<b>Amllder</b>
0	0
10	1
20	1
30	2
40	2
50	3
60	10
70	10
80	21
90	30
100	203
<b>Cyfanswm</b>	<b>283</b>



---

---

---

---

---

---

---

---

---

---

---

---

---

---

---



---

---

---

---

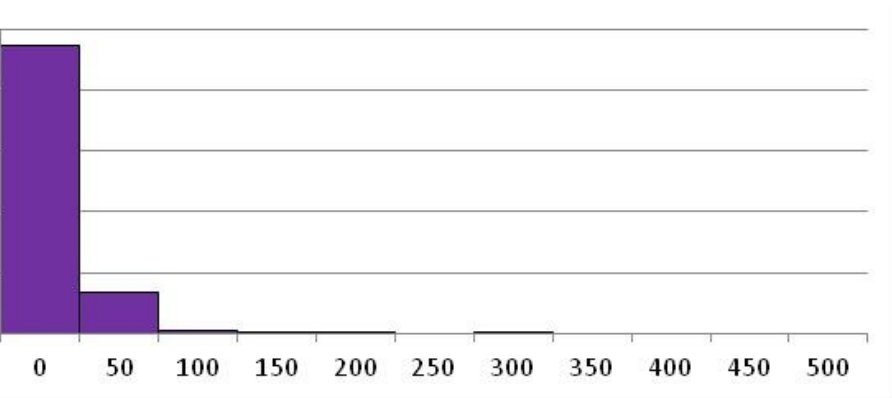
---

---

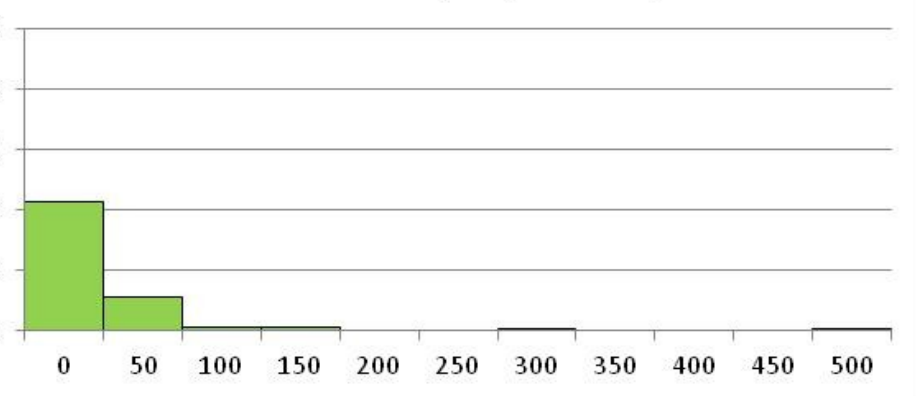
---

---

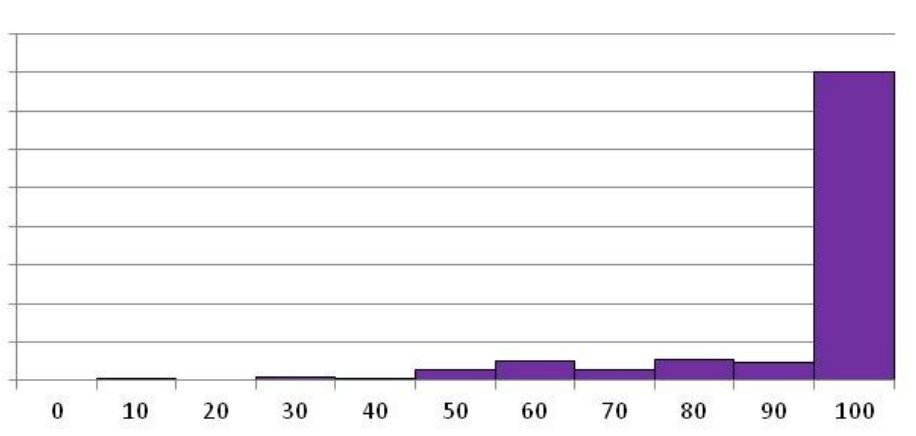
**SWM A GYNHYRCHWYD (HEB FOD MEWN GRWPIAU)**



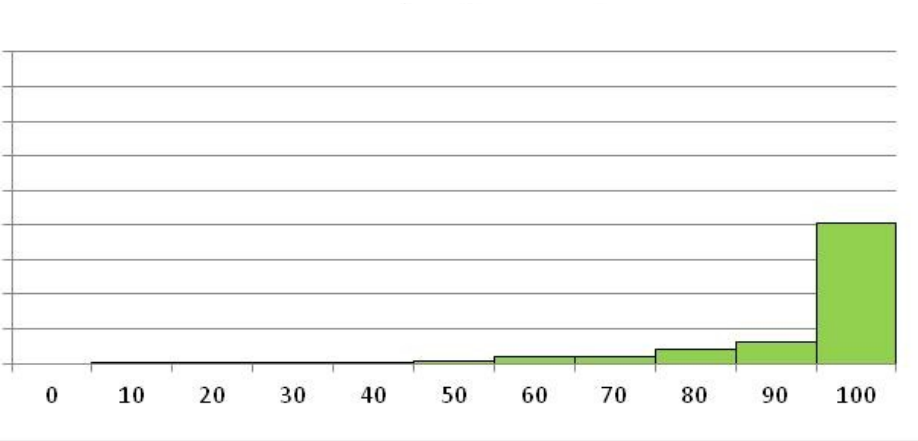
**SWM A GYNHYRCHWYD (AELODAU GRWPIAU)**



**% WEDI'I FARCHNATA (HEB FOD MEWN GRWPIAU)**



**% WEDI'I FARCHNATA (AELODAU GRWPIAU)**



## ETHIOPIA

### Cym

Unigolyn nad yw'n aelod o grŵp

Oed mewn blynyddoedd	36.78
Blynyddoedd o Addysg	0.32
Statws Priodasol	2.05
Mynegai Cyfoeth	37.09
Grŵp Ethnig	0.87
Blynyddoedd o Brofiad	10.50
Swm a Gynhyrchwyd	23.62
% wedi'i farchnata	93.90
Dibyniaeth o ran bywiolaeth	3.36

### Canc

Unigolyn nad yw'n aelod o grŵp

Oed mewn blynyddoedd	35.00
Blynyddoedd o Addysg	0.00
Statws Priodasol	2.00
Mynegai Cyfoeth	36.27
Grŵp Ethnig	1.00
Blynyddoedd o Brofiad	8.00
Swm a Gynhyrchwyd	15.00
% wedi'i farchnata	100.00
Dibyniaeth o ran bywiolaeth	3.00

### Uchaf

Unigolyn nad yw'n aelod o grŵp

Oed mewn blynyddoedd	70.00
Blynyddoedd o Addysg	10.00
Statws Priodasol	5.00
Mynegai Cyfoeth	79.61
Grŵp Ethnig	1.00
Blynyddoedd o Brofiad	50.00
Swm a Gynhyrchwyd	300.00
% wedi'i farchnata	100.00
Dibyniaeth o ran bywiolaeth	4.00

### Isafs

Unigolyn nad yw'n aelod o grŵp

Oed mewn blynyddoedd	2.00
Blynyddoedd o Addysg	0.00
Statws Priodasol	1.00
Mynegai Cyfoeth	0.00
Grŵp Ethnig	0.00
Blynyddoedd o Brofiad	1.00
Swm a Gynhyrchwyd	1.00
% wedi'i farchnata	10.00
Dibyniaeth o ran bywiolaeth	1.00

**edr**

---

Aelod o grŵp

34.25

1.31

2.16

37.37

1.00

8.68

40.22

94.05

2.86

---

**olrif**

---

Aelod o grŵp

34.00

0.00

2.00

35.76

1.00

7.00

30.00

100.00

3.00

---

**swm**

---

Aelod o grŵp

80.00

12.00

6.00

100.00

1.00

40.00

500.00

100.00

4.00

---

**wm**

---

Aelod o grŵp

10.00

0.00

1.00

5.85

0.00

1.00

1.00

12.50

1.00

---